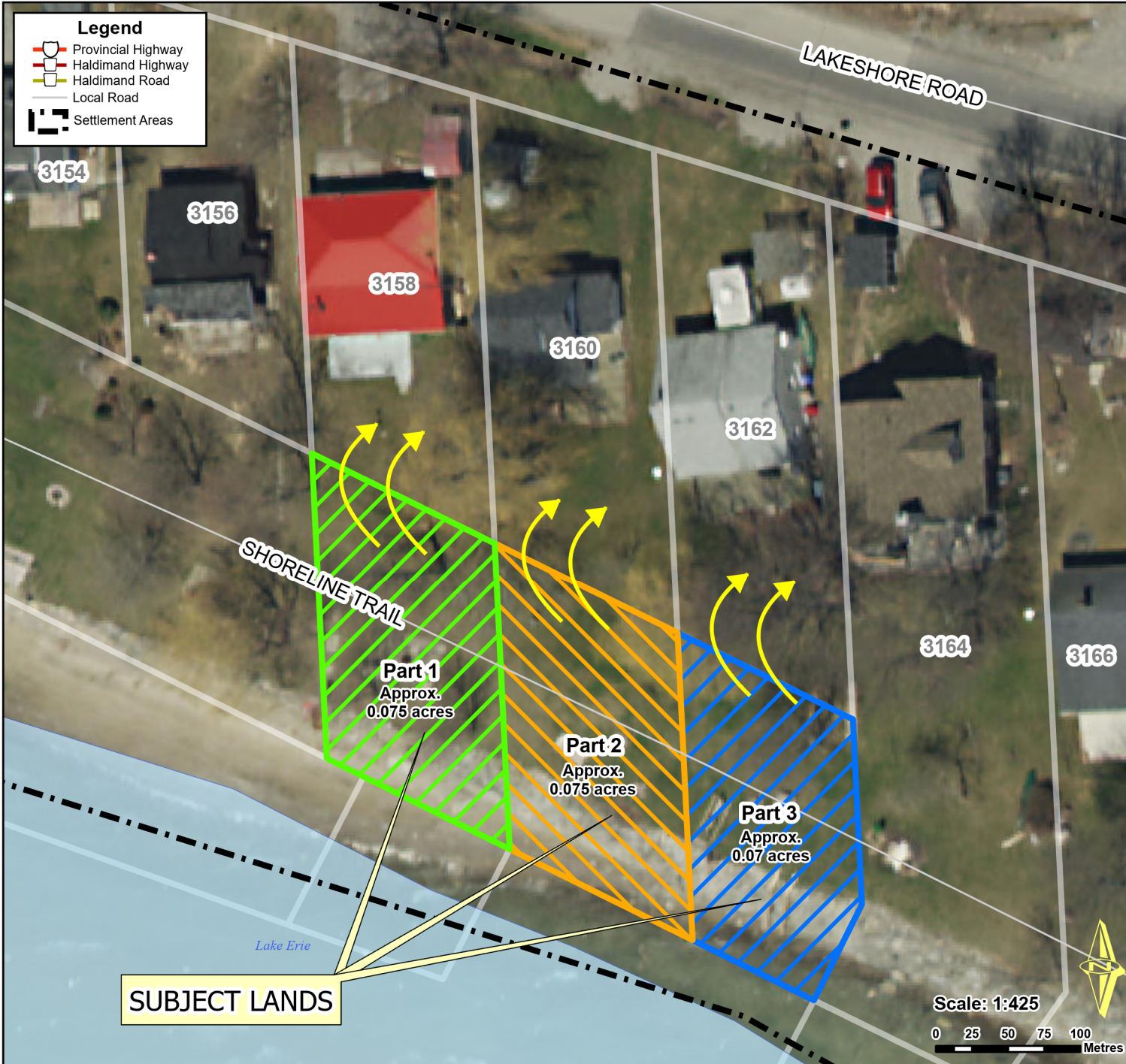


Part of Lakeshore Road, Dunnville



Location:
OLD LAKESHORE RD (SHORELINE TRAIL)
GEOGRAPHIC TOWNSHIP OF DUNN
WARD 5

Legal Description:
A PORTION OF PT LT 3-4 CON 4 SDR DUNN
(TRAVELLED ROAD) & AND AS IN D4278 AKA
OLD LAKESHORE RD E OF W LIMIT OF
HC79934 (SECONDLY) EXCEPT PARTS 1 TO 5
ON 18R7335, PTS 1 TO 6 PL 18R7677

Size:
Approx 0.22 Acres

HALDIMAND COUNTY, ITS EMPLOYEES, OFFICERS AND AGENTS ARE NOT RESPONSIBLE FOR ANY ERRORS, OMISSIONS OR INACCURACIES WHETHER DUE TO THEIR OWN NEGLIGENCE OR OTHERWISE. DO NOT USE FOR OPERATING MAP OR DESIGN PURPOSES. ALL INFORMATION TO BE VERIFIED.

