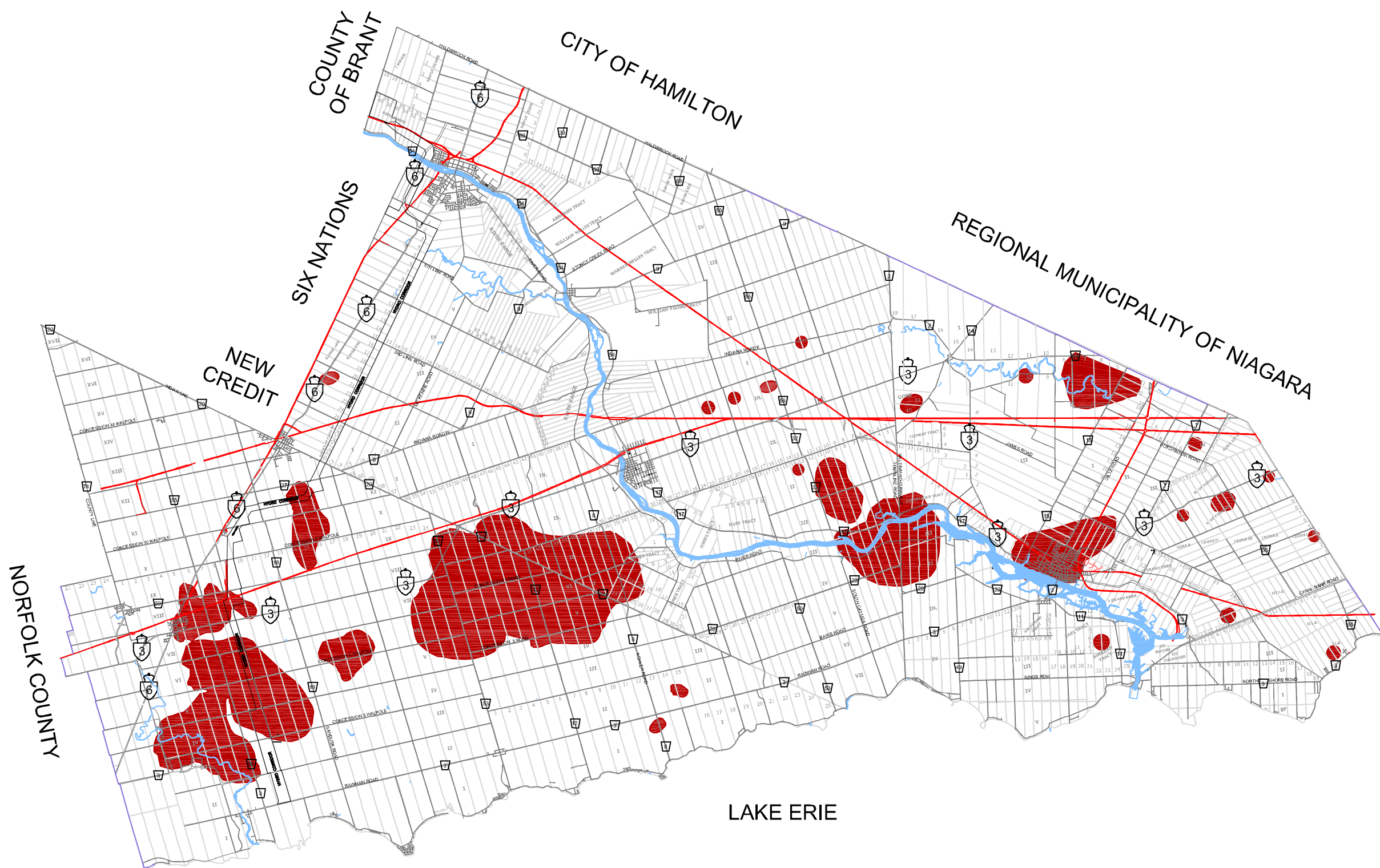


# OFFICIAL PLAN SCHEDULE "G"

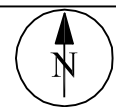
## HALDIMAND COUNTY NATURAL GAS RESOURCE AREAS

### LEGEND

- NATURAL GAS RESOURCE
- PROVINCIAL HIGHWAY
- HALDIMAND ROAD
- LOCAL ROAD
- WATER COURSE



DECISION DATE:  
JUNE 8, 2009



1 IN = 5000 METRES