

THE CORPORATION OF HALDIMAND COUNTY

By-law Number 1345-HC/23

**Being a by-law to further amend Zoning By-law HC 1-2020,
as amended - mapping update – Walpole Industrial**

WHEREAS Haldimand County is authorized to enact this by-law, by virtue of the provisions of Section 34 of the *Planning Act*, R.S.O. 1990,C. P13, as amended;

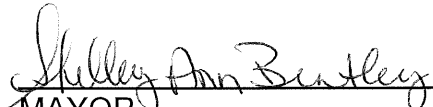
AND WHEREAS this by-law conforms to the Haldimand County Official Plan,

NOW THEREFORE, the Council of The Corporation of Haldimand County enacts as follows:

1. **THAT** Schedule “A” of By-Law HC 1-2020, as amended, is hereby further amended by changing the zoning of the subject lands identified on Map “A” and Map “B” (attached to and forming part of this By-Law) from Light Industrial (ML) *Zone* to Agriculture (A) *Zone*.
2. **AND THAT** this by-law shall come into force in accordance with the provisions of the *Planning Act*.


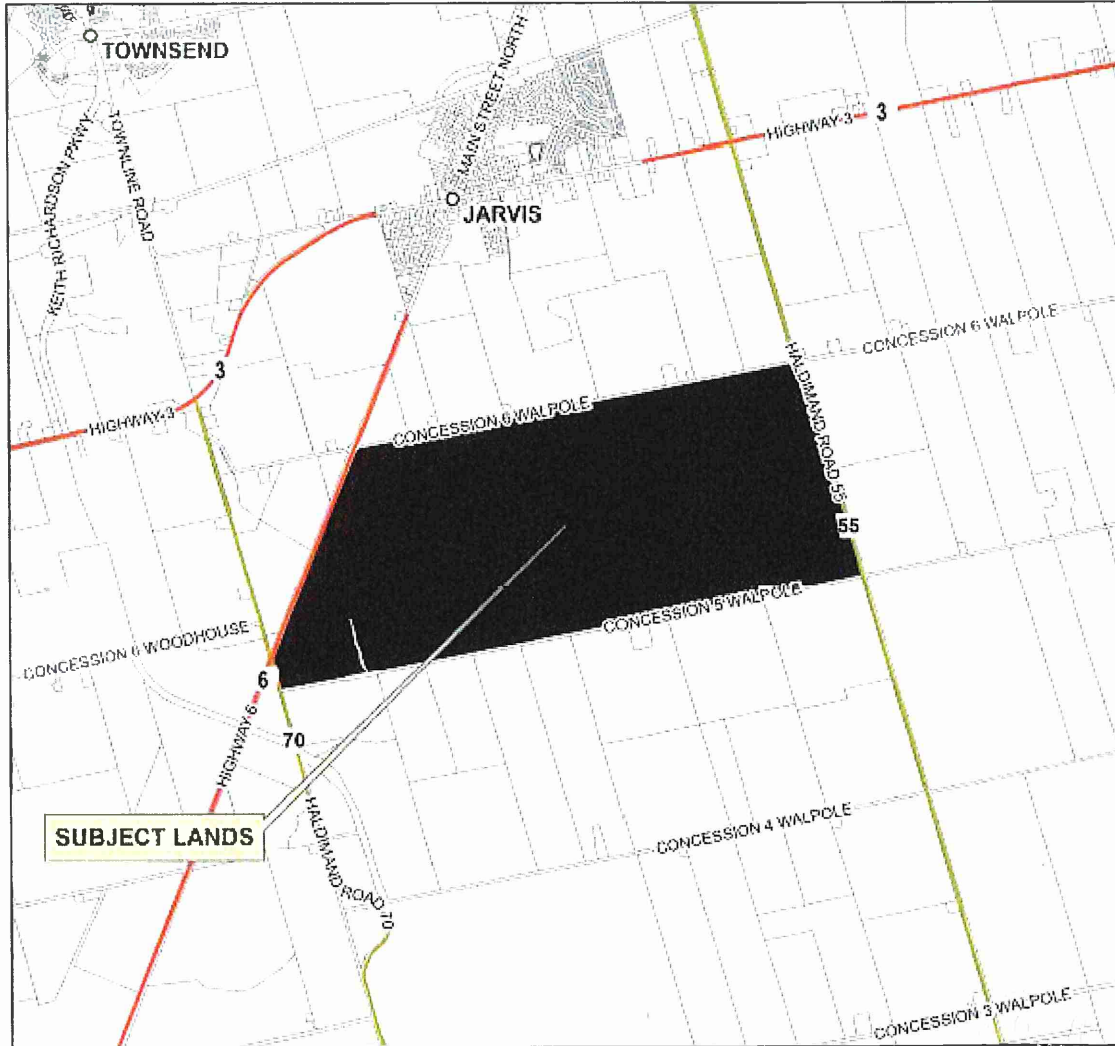
READ a first and second time this 27th day of March, 2023.

READ a third time and finally passed this 27th day of March, 2023.


MAYOR


CLERK

MAP A - Key Map
 Haldimand County
 Geographic Township of Walpole
 Ward 1

This is Map A to Zoning By-law 1345-HC/23 Passed the 27th day of March 2023.

Shelley Ann Bentley
 MAYOR

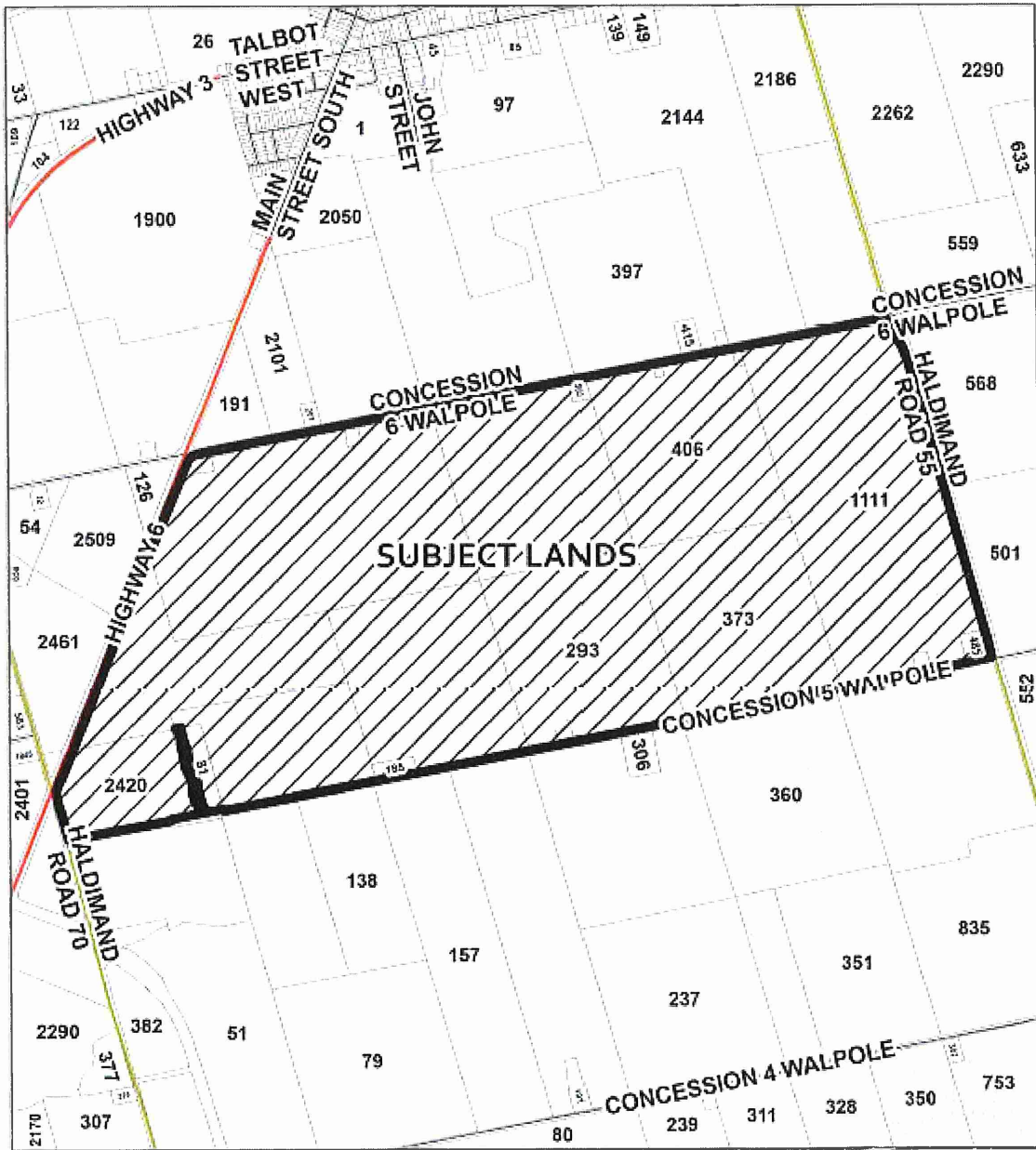

E. Eichenbaum
 CLERK

Ref. PDD-05-2023

P:\PDD\1345\Town\Town1345\2023\Attachments\2023\Map A\Map A.docx

MAP B - Detail Map
Haldimand County
Geographic Township of Walpole, Ward 1

SCALE - 1:21,300
0 250 500 750 1,000 Metres



This is Map B to Zoning By-law 1345-HC/23 Passed the 27th day of March 2023.

Shelley Ann Bentley
MAYOR

E. Eichenbaum
CLERK

Ref: PDD-25-2023

PURPOSE AND EFFECT OF BY-LAW 1345-HC/23

The subject lands identified on Maps A and B are to rezone the subject lands from Light Industrial (ML) zone to Agriculture (A). This amendment will align with the Official Plan designation and correct the zoning for the parcels.

Report Number: PDD-05-2023

Roll Nos.:2810332003074500000; 2810332003074000000; 2810332003074100000;
2810332003075000000; 2810332003075500000; 2810332003078000000;
2810332003077000000; 2810332003080000000; 2810332003069000000;
2810332003068600000; 2810332003068000000; 2810332003067000000;
2810332003067200000; 2810332003066000000; 2810332003066100000;
2810332003065000000; 2810332003063000000; 2810332003064000000;
2810332003064500000; 2810332003078500000