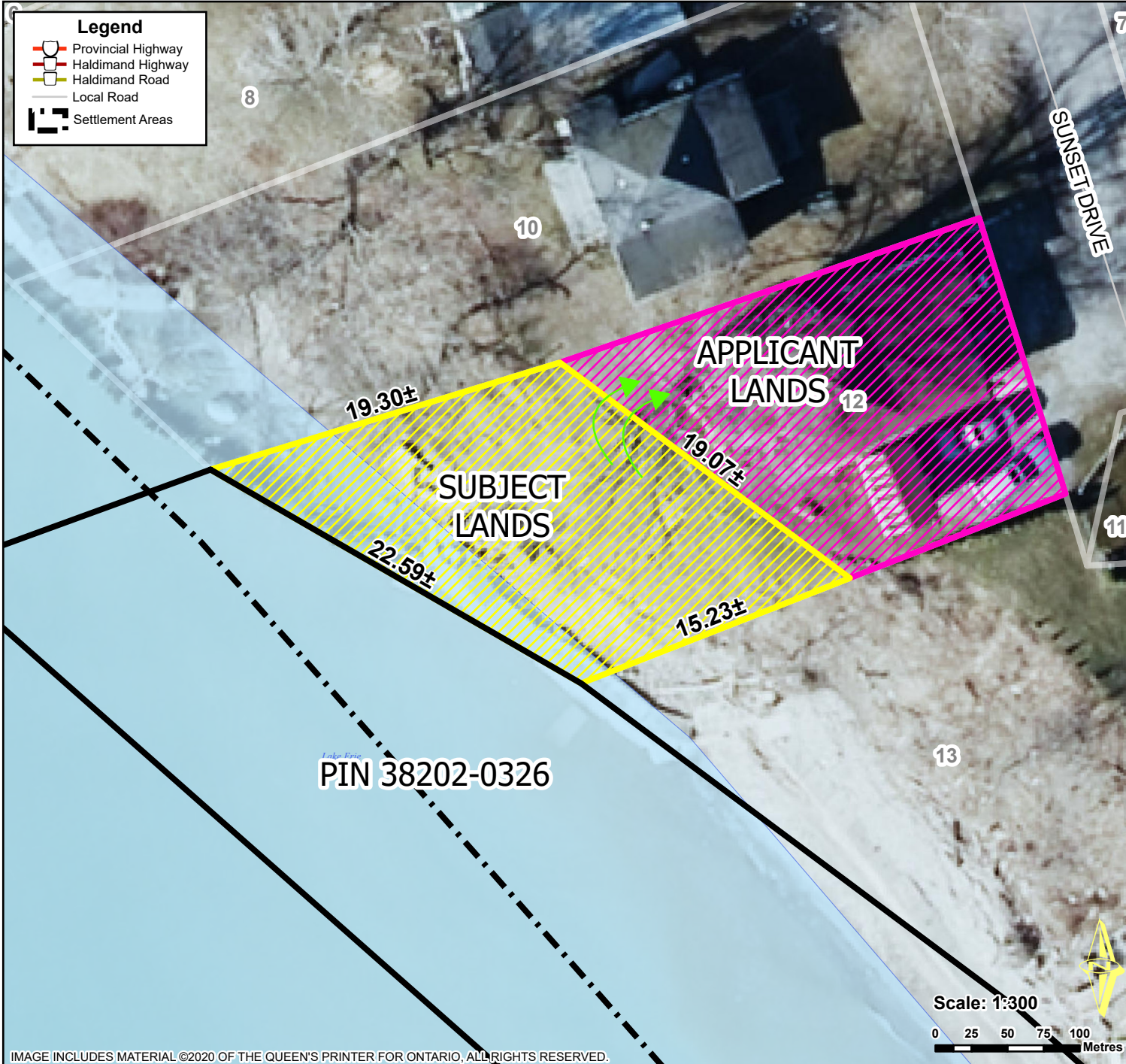


Location Map: Part of Old Lakeshore Road, Walpole



Location:
12 SUNSET DRIVE
GEOGRAPHIC TOWNSHIP OF WALPOLE
WARD 1

Legal Description:
WAL PLAN 21074 LOT 1 PLUS
R O W S NEW LAKESHORE RD

Property Assessment Number:
2810 332 002 12100 0000

Size:
0.07 Acres

Zoning:
RV (Vacation Residential)

HALDIMAND COUNTY, ITS EMPLOYEES, OFFICERS AND AGENTS ARE NOT RESPONSIBLE FOR ANY ERRORS, OMISSIONS OR INACCURACIES WHETHER DUE TO THEIR OWN NEGLIGENCE OR OTHERWISE. DO NOT USE FOR OPERATING MAP OR DESIGN PURPOSES. ALL INFORMATION TO BE VERIFIED.

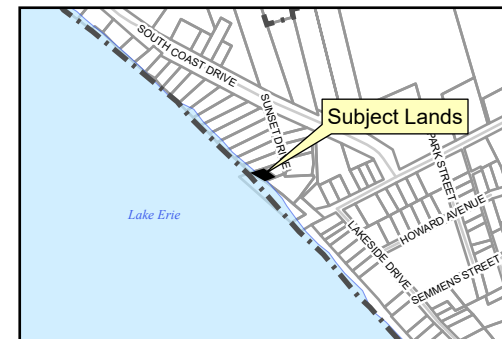


IMAGE INCLUDES MATERIAL ©2020 OF THE QUEEN'S PRINTER FOR ONTARIO, ALL RIGHTS RESERVED.